



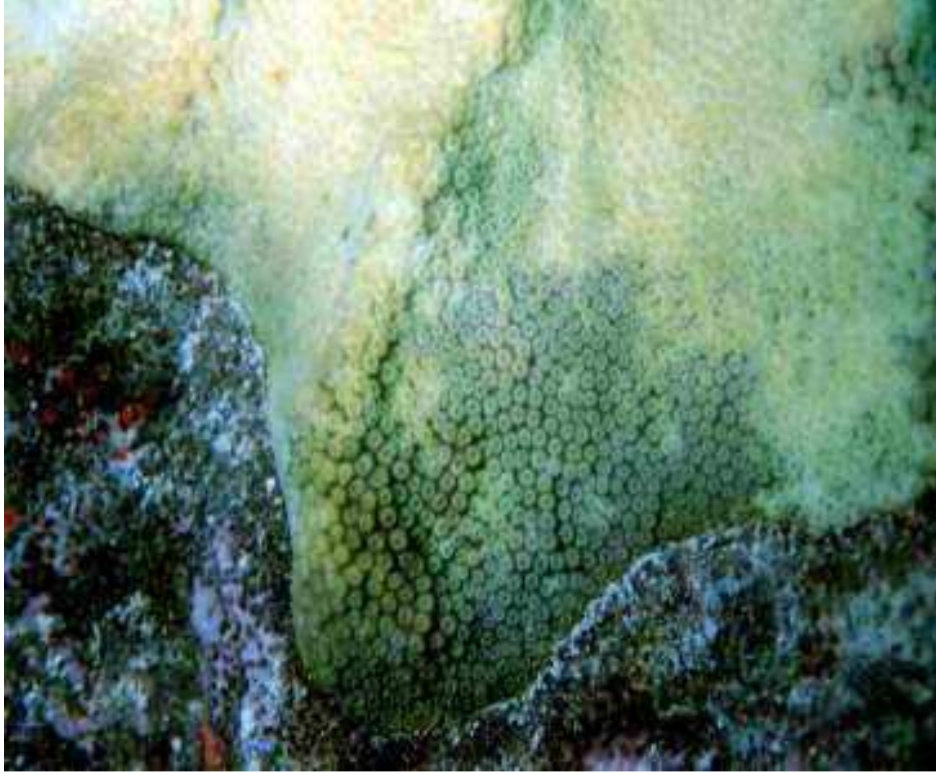
Fire Coral Bleaching

10/2/97 Sand Key near Buoy #10. *Milliporina complanata* (blade fire coral), one of the first species on the reef to show signs of coral bleaching.



Elkhorn Coral Bleaching

10/1/97 Sand Key. This area is 100 feet north of mooring buoy #10. Most all of the Elkhorn coral colonies in this area are bleached and are growing in an unusual manner. The sea water temperatures were not exceptionally warm that summer (84 degrees), however the combination of poor visibility and increased sedimentation in the water column triggered bleaching.

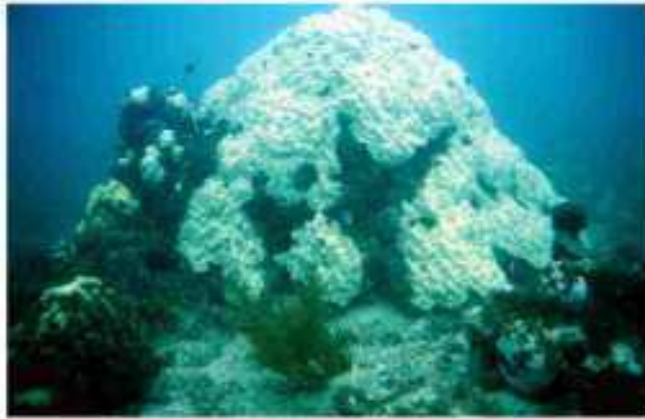


Close Up Bleaching

10/2/97 Sand Key mooring buoy #10. *Montastrea faveolata* (star coral), subject I.D. 'YB3' (south face).
This is an active Yellow Band Disease portion of this coral colony which is also bleached.



6/3/96



10/2/97

Before/After Bleaching

This is the south face of the subject "SKB10ZS3'*Montastrea annularis* . This large coral colony was entirely bleached this summer. Most of the corals bleached in the Sand Key are slowly recovering (as of October 10, 1997).



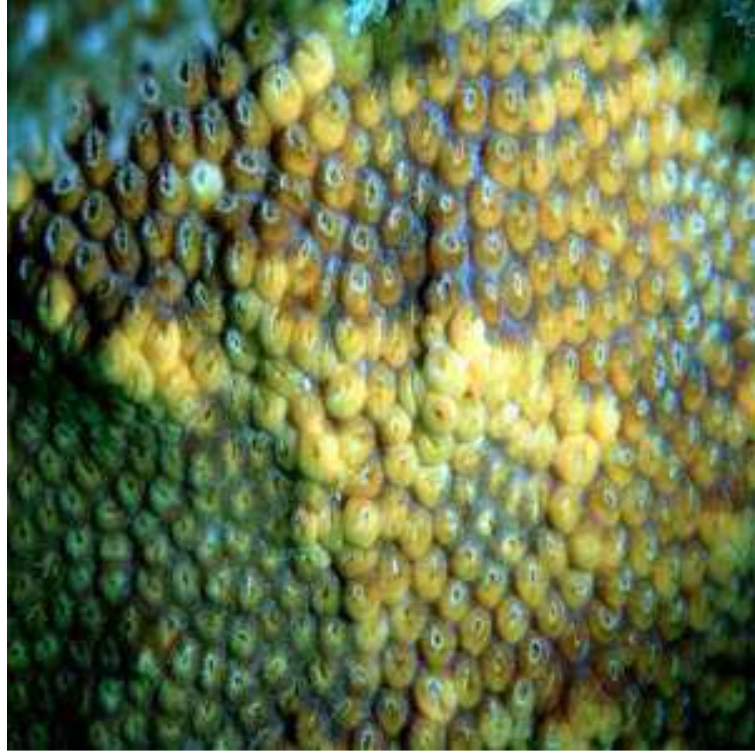
Star Coral Bleaching

10/2/97 Sand Key mooring buoy #10. These colonies are to the east of Subject #YB1. *Siderastrea siderea* (star coral) and *Porites porites*(finger coral) bleached.



Brain Coral Bleaching

10/2/97 Sand Key. *Diploria labyrinthiformis*(grooved brain coral) and *Montastrea faveolata* (star coral) bleached.



Boulder Coral Stress

10/2/97 *Montastrea cavernosa* ; Sand Key mooring buoy #10.
Notice how some of the polyps seem to be bulging and restricting others?



Boulder Coral Stress

10/1/97 *Montastrea cavernosa*; located a short distance north of mooring U-bolt #10 at Sand Key reef.
Notice how some of the polyps seem to be inflated while others look deflated? This is occurring on many of the *cavernosa* colonies in this area and coincides with a severe coral bleaching event.



Boulder Coral Stress

10/2/97 *Montastrea cavernosa* ; this colony is located at Sand Key south of the mooring buoy U-bolt #10, west of *Montastrea faveolata* (#YB1).



All Stress

10/2/97 Sand Key; coral stress is v ery evident throughout the Key West area. The purple sea fans are afflicted with a variety of problems and these *Montastrea cavernosa* colonies are showing signs of stress.



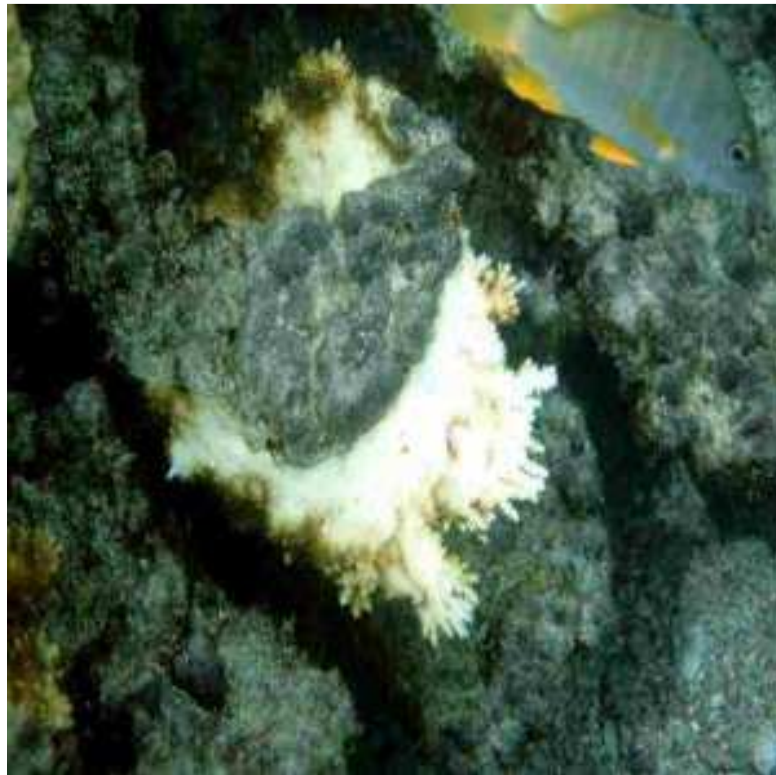
Black Band Disease

10/2/97 Sand Key; a small *Montastrea cavernosa* with Black Band Disease. The amount of coral tissue being lost to Black Band in this area is considerable.



Black Band Disease

10/2/97 Sand Key near mooring buoy #10. A rather large *Montastrea cavernosa* is showing signs of bleaching and has active Black Band disease. Many corals of this species are being affected by a combination of Black Band disease and coral bleaching.



Elkhorn Algae

10/2/97 Rock Key. Algae can be seen taking over this bleached coral colony. Most all of the Elkhorn coral located in this area of Rock Key is being lost to this algae.



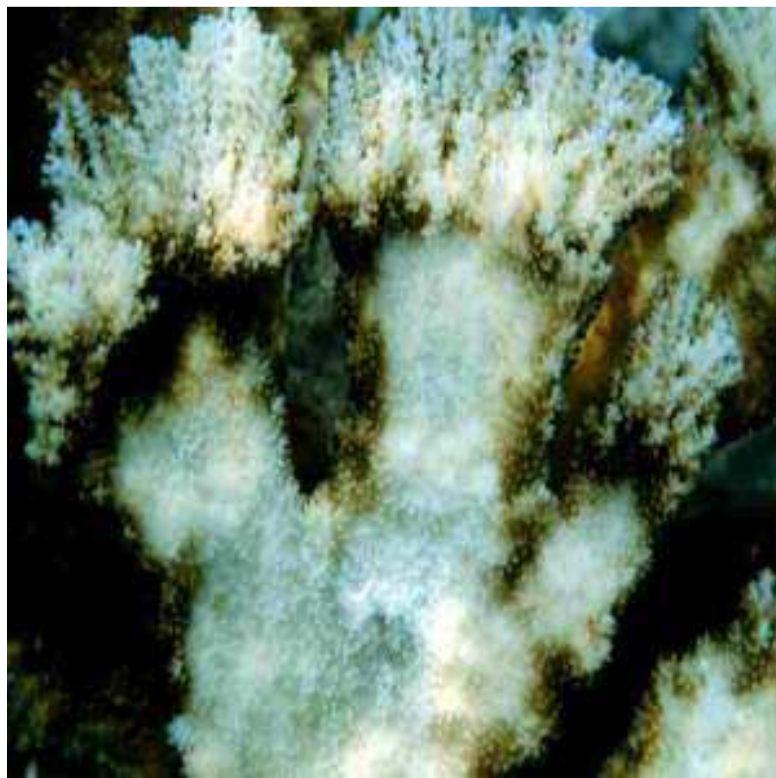
Elkhorn Algae

10/2/97 Rock key. An algae is covering much of the Elkhorn coral in the Rock Key area. This algal coverage is slowly dominating the back of the reef. It appears to be growing over and covering healthy corals as well as the diseased and bleached coral colonies.



Elkhorn Growth

10/2/97 Rock Key. The *Acropora palmata* colonies on Sand Key and Rock Key reefs are exhibiting very unusual feather like growths as well as signs of bleaching.



Elkhorn Growth

10/2/97 Rock Key near buoy #12. Almost all of the *Acropora* colonies in the survey area exhibit these feather-like growth patterns which are not common to this species of coral.