

What?

The No Discharge Zone designation prohibits discharging sewage into all State waters of the Florida Keys National Marine Sanctuary. This includes treated sewage from marine sanitation devices but does not apply to gray water from showers or sinks, only sewage. Through-hull fittings for disposal of sewage should be closed and appropriate measures to dispose of sewage implemented. The No Discharge Zone strengthens existing regulations under the Florida Clean Vessel Act so that even chemically-treated sewage cannot be discharged overboard.

Boundaries?

All State waters of the Florida Keys National Marine Sanctuary are included in the No Discharge Zone. Waters of the State extend to 3 miles from land on the Atlantic side of the Florida Keys and 9 miles from land on the Gulf of Mexico side of the Florida Keys. The State Clean Vessel Act also prohibits discharging raw/untreated sewage into all State waters and sewage may not be discharged at any of the Florida Keys National Marine Sanctuary SPA's (Sanctuary Preservation Areas) or the Western Sambo and Tortugas Ecological Reserves.

Where?

Pump out facilities are available for boaters at various locations throughout the Florida Keys. (See map). In addition, mobile pump-out services are available. For the most current list of available facilities, log onto www.co.monroe.fl.us/ndz/info.htm.

Who?

All vessels (charterboats, liveaboards, fishing boats, private vessels, commercial vessels, houseboats and floating structures) are prohibited from dumping sewage, whether treated or not, into waters of the Sanctuary within the No Discharge Zone. Vessels 26 feet or longer with an enclosed cabin with berthing facilities (as noted in the Florida Clean Vessel Act) and floating structures with enclosed living space must install a holding tank and close the through-hull valve from the toilet.

How?

Most pump-out facilities have universal deck fittings, but you should install a fitting on your vessel that provides a tight seal from your holding tank. Boats can be pumped out where you are by calling a local mobile pump-out service, or you can tie up to a dock with a pump-out facility. Look for the pump-out symbol.



A dock attendant may be available to assist and a fee charged for the service. Most tanks can be pumped out and rinsed in less than 15 minutes. Dump portable waste in vessel pump-out facilities as well. Use biodegradable cleaning products instead of toxic cleansers that damage the marine environment.

On all marine sanitation devices now in use, the valve directing the sewage overboard should be closed and secured with a tie, lock or strap to prevent discharge into the ocean while in the No Discharge Zone.

Penalties

Existing State laws permit a State or U.S. Coast Guard officer to board a vessel to inspect a marine sanitation device (MSD).

Violations are noncriminal infractions carrying fines of \$50 (equipment) and \$250 (discharge). If a houseboat or floating structure fails to comply within 30 days of being cited, the court can order removal of the craft at the owner's expense.

The Florida Keys is regulated by several different jurisdictions which have the authority to establish ordinances to implement the No Discharge Zone designation. All Keys municipalities and Monroe County have adopted such an ordinance, establishing penalties for violation of the ban on discharging sewage overboard.

Why?

The Florida Keys are famous for diving, fishing and boating. Tourism and commercial fishing industries depend upon clean, healthy water. North America's only living coral barrier reef lies just offshore. Coral reefs need clear, clean, nutrient-free waters to thrive.

Water quality is declining throughout the Florida Keys. One of the sources of pollution is an over-abundance of nutrients from inadequately-treated sewage.

Sewage contamination is a health threat. Local beaches have reported increased levels of fecal coliform contamination, which can cause illness and diseases such as hepatitis, typhoid, cholera, dysentery, and gastroenteritis.

The increasing number of boaters in Keys waters contribute to water quality problems. We can all do our part to eliminate pollution from local waters by using vessel pump-out facilities and honoring the No Discharge Zone designation.

FOR MORE INFORMATION

Visit the website at
http://monroecofl.virtualtownhall.net/Pages/MonroeCoFL_MarineRes/discharge

TO REPORT ILLEGAL DUMPING
CALL 1-888-404-FWCC (3922)

This brochure is produced in cooperation with the above agencies by

Florida Keys National Marine Sanctuary
Key West: (305) 292-0311
Marathon: (305) 743-2437
Key Largo: (305) 852-7717

REEF RELIEF®

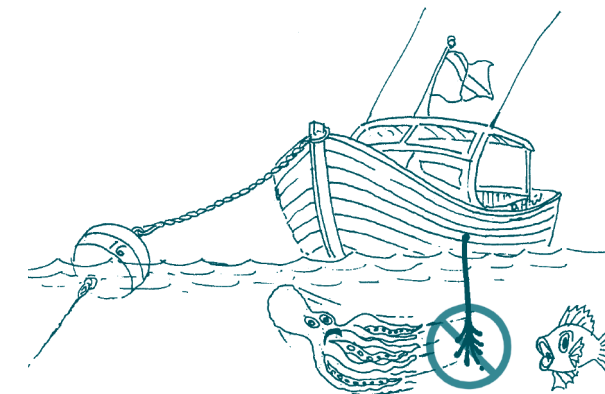
P.O. Box 430, Key West, Florida 33041
Reef Relief Environmental Center
631 Green Street, Key West
(305) 294-3100, fax 293-9515
reef@reefrelief.org www.reefrelief.org

♻️ Printed on recycled paper

Special Thanks to Monroe County Boating Improvement Fund for funding this brochure.

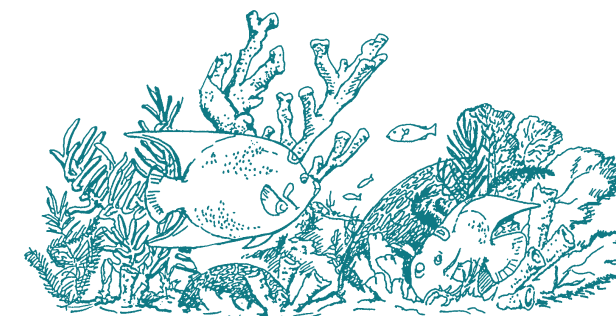


THE FLORIDA KEYS IS A NO DISCHARGE ZONE FOR BOATER SEWAGE



Map of vessel pump-out facilities inside

Effective June 19, 2002, it is prohibited to discharge sewage into state waters of the Florida Keys National Marine Sanctuary



FLORIDA KEYS NO DISCHARGE ZONE

**PUMP OUT
HERE**



PUMP OUT STATION LOCATIONS

- 1 Westin Key West Resort
- 2 Galleon Marina
- 3 Key West Bight Marina
- 4 Key West Conch Harbor Marina
- 5 City Marina at Garrison Bight
- 6 Sunset Marina
- 7 Bama Sea Products/Bama One
- 8 Safe Harbor Marina
- 9 Key West Oceanside Marina
- 10 Naval Air Facility (military only)
- 11 NAS Key West (Boca Chica)
- 12 Little Palm/Dolphin Marina
- 13 Bahia Honda State Park
- 14 Sunshine Key
- 15 Burdine's
- 16 Faro Blanco Oceanside
- 17 Faro Blanco Bayside
- 18 Marathon Yacht Club
- 19 City of Marathon Marina
- 20 Sombrero Cay Clubs Resort & Marina
- 21 Coconut Cay Resort & Marina
- 22 Key Colony Beach Marina
- 23 Coco Plum Marina & Storage

- 24 Marie's Yacht Club
- 25 Hawk's Cay Marina
- 26 World Wide Sportsman Bayside Marina
- 27 Coral Bay Marina
- 28 Holiday Isle Marina
- 29 Smuggler's Cove Marina
- 30 Snake Creek Marina
- 31 Islamorada Founder's Park
- 32 Mangrove Marina
- 33 Blue Fin/Rock Harbor Marina
- 34 Mariners Club Marina
- 35 Key Largo Harbor Marina
- 36 Manatee Bay Marina
- 37 John Pennekamp Coral Reef State Park
- 38 Ocean Reef Club

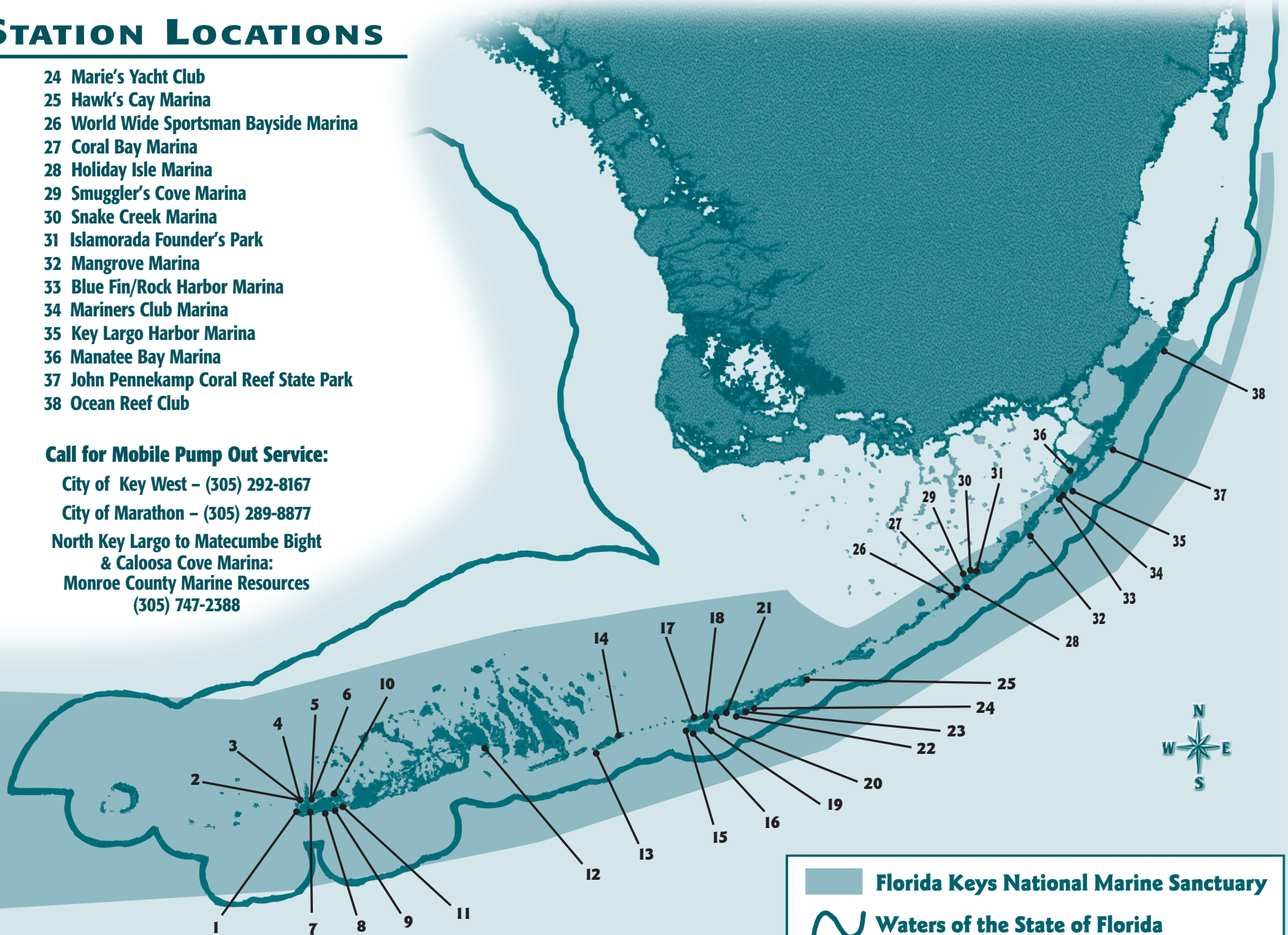
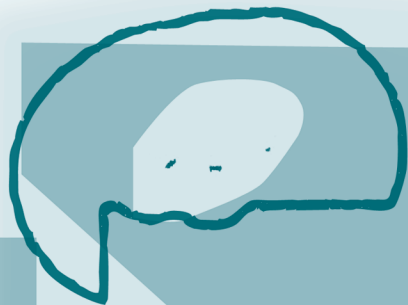
Call for Mobile Pump Out Service:

City of Key West - (305) 292-8167

City of Marathon - (305) 289-8877

North Key Largo to Matecumbe Bight
& Caloosa Cove Marina:

Monroe County Marine Resources
(305) 747-2388



- Florida Keys National Marine Sanctuary
- Waters of the State of Florida